

Little Greene®

— PAINT & PAPER —

Painting Tips
for home decorators



We want you to get the best out of your home decorating, so we have prepared this brief document, giving you a few tips to help you along the way...

Recommended Equipment

You can buy a high quality decorator's kit from Little Greene that will suffice for most household jobs – the tools we supply have been chosen for their ease of use, quality in application, long life and excellent value for money.



The kit contains:

1½" roll of Masking Tape
(for protecting joins/edges and surface fixings)

1" & 2½" Synthetic Brushes
(suitable for all paint types)

Pack of Fine Abrasive Paper
(for surface preparation/smoothing)

9" Medium Pile Roller & Roller Tray
(for applying emulsion paint to walls & ceilings)

You might also need:

Cardboard & dust sheets
Scraper
Preparatory filler
Cotton clean-up rag
Vacuum cleaner

Roller extension handle
(for painting tall walls and ceilings)
Long-handled mini roller
(for painting awkward areas of wall e.g. behind radiators & pipework)

Paint can opener
Paint Stirrer
Paint kettle (for decanting)
Actual kettle (for a brew)
Step ladders

Scrapers – Use the point on the scraper to pick out loose paint and cracked plaster, and the flat top to scrape away ALL flaking paint. Use fine abrasive paper to smooth off all surfaces before painting.

Brushes – The straight-edge, mid-stiffness brushes from Little Greene will handle all tasks nicely. You need a small brush with a good quality edge for cutting in, and a larger brush to efficiently paint bigger areas. Don't use a natural bristle brush for water-based paint – the bristles will absorb and retain paint that is intended for the wall, and will expand which reduces the quality of the brush edge.

Rolling – Unless you're a professional decorator, rollers larger than nine inches can be heavy, unwieldy, and inaccurate. If you are getting your equipment elsewhere be sure to select the right nap for the surface you're painting: rough (3/4"), medium (1/2"), smooth (3/8"), or very smooth (1/4"). As a general rule, the smoother the surface you're painting, the shorter the nap you use.

Decanting – When using a brush, especially near ceilings or in cramped areas, decant a little paint from the can into a paint kettle or other small, lightweight container. A clean plastic food-storage tub with a tight-fitting cover is ideal for emulsion paint; a metal can is better for oil paint. Immediately after decanting, replace the lid on the paint can to prevent unnecessary evaporation or contamination while you are working.

Tip

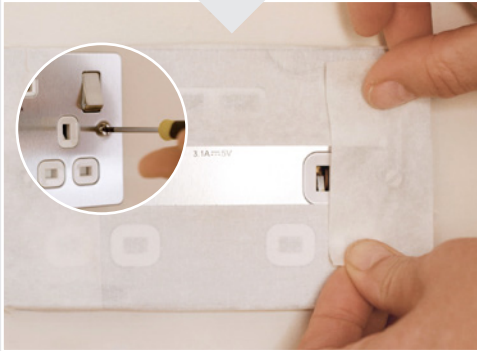
Using your fingers, lightly dampen the brush with a little water before use - it reduces absorption and makes the brush easier to clean after painting.

Tip

If you can, prep the room the night before you plan to decorate. It means you will easily be able to apply two coats on your walls and have the room back to normal in one day.

Preparing the Room

1. Remove or roll up rugs and curtains. Make sure furniture is moved to the centre of the room and covered. Put down a dust sheet, card or paper on the floor in the area you will be painting.
2. Remove any picture frames or fixings from walls. Loosen (or completely remove) any switch and socket plates, door and window handles – they will be easier to tape-off if loose before painting.
7. Stay positive! Although this bit's not very exciting, all this preparation will make a big difference to the quality of your finished wall.
8. Mask the edges of any glazing in windows and doors, and all pre-painted woodwork using low-tack tape.



3. Make sure you completely remove any loose paint / plaster / wallpaper, and ensure the surface is dry.
4. If painting over wallpaper, make sure all seams are properly glued.
5. Rake out and fill all cracks, screw holes, seams and imperfections with proprietary filler.



Tip

Shine a good quality torch closely along the surface of the wall to easily identify blemishes worthy of sanding and/or filling.

6. Sand the dried filler smooth with fine abrasive paper.

Tip

Once the tape is in place, run the edge of a scraper or putty knife along it to get a really good edge that paint will not bleed through.



Tip

If painting skirting boards in a carpeted room, mask the carpet with an overlap of tape, and use a scraper edge to tuck it well down between the carpet edge and skirting board.

9. For the best finish, sand all areas very lightly before painting.



10. Remove all dust and debris from walls using a damp cloth, tack cloth or vacuum cleaner.

Primers & Undercoats

PRIMERS are used to address issues presented by the underlying surface and are usually quite specific to the type of substrate (for example resinous wood, friable plaster or ferrous metal).

UNDERCOAT is traditionally a separate layer, formulated to provide the best surface for the desired topcoat; promoting good adhesion, depth of colour, flatness and longevity.



Little Greene Intelligent A.S.P.

Little Greene Intelligent All-Surface Primer Undercoat is both primer AND undercoat in a single application, and can be used to prepare almost any household surface for decoration, including: plaster, woodwork, concrete, glass, uPVC, brick, ceramic tiles, melamine and all metals.

It's water-based, quick-drying, compatible with all Little Greene finishes (water and oil-based), and can be supplied tinted for every Little Greene colour, to help achieve its full depth in one to two coats.

Use Intelligent ASP to:

1. Seal and protect unpainted surfaces.
2. Provide a receptive surface for all topcoats on almost any household surface.
3. Prevent stains from bleeding through the topcoat.
4. Ease the transition from a dark to a light colour, or vice versa.
5. Help with transition from one paint type to another (an old oil-based paint to a new coat of water-based paint, for example).
6. Improve the application, look and long-term performance of the topcoat.

Apply one coat of Intelligent A.S.P. by brush or roller to almost any domestic surface and allow to dry for four hours before commencing the topcoats.

Painting a Wall

Suggested Finishes:

Absolute Matt Emulsion | Intelligent Matt Emulsion
Intelligent Eggshell

1. With your walls prepared, lay a flattened corrugated box on the floor, its padded surface will protect the floor and soak up any drips better than polythene sheets. Set out your tools, then open the paint and give it a good stir (all the way to the bottom of the tin. This is especially important in older tins of paint).



Tip

Prise the lid off the can all the way round it rather than in one place. The spoon end of a teaspoon works really well, and the handle end is useful for removing metal transportation clips.

2. You will begin with the 'cutting-in' – the careful painting of the edges of the wall(s), which you won't be able to do accurately with a roller or bigger brush. Decant just an inch or so of paint into a paint kettle, or a similar, easy-to-handle container.



3. Load a one or two inch straight-edge brush. Only dip the bristles half-way into the paint, you don't want to get any into the ferrule (the metal sleeve that holds the bristles). Clear excess paint from the sides of the brush by dragging them lightly over the lip of the container.

- Working from the ceiling down, paint a two or three inch frame around all the edges of the wall. Paint the corners, edges of the skirting board and around windows, doors, light fixtures, sockets and switch plates.



- Radiators are difficult to remove from walls during decoration. Protect them with a dustsheet or similar and paint behind them, as far down the wall as you can, bearing in mind that you can see the wall through column radiators. A long-handled mini roller can help with this.
- Before the painted frame is completely dry, use a roller to cover the large areas. Slip the appropriate sleeve onto the cage (the roller frame). Attach the roller extension handle if needed.
- Pour about an inch of paint into the deep reservoir end of the paint tray. Leave the other end of the tray clear.

Tip
For an easy clean-up, line your roller tray with a bin bag (or even tin foil) before you fill it with paint.



Dip the roller into the tray, allow the paint to soak into the sleeve, then move it back and forth on the roller bed. The roller should be evenly saturated with paint, but not overloaded. As a test, the roller should spin easily and smoothly in the air, without dripping any paint.



- Once again, you will work from the ceiling down, rolling an area about one metre (three feet) square at a time. Work the roller up, down and across until you've covered the area evenly, you're aiming to apply an even thickness of paint across the whole surface. Cover the entire wall in this way, square by square.
- If paint begins to build up on the wall at the edges of the roller stroke, gently roll out the lines immediately. Water-based paints start drying quickly, so don't go back over tacky paint as you will ruin the surface.
- Keep the roller loaded and watch out for 'painters holidays' – patches where paint is too thin. If another coat is necessary, allow the paint to dry properly before repeating.

Tip
Between coats, avoid having to wash your brushes and rollers by wrapping them in cling film or strong tin foil.

If there's a significant break before the second coat, you can prevent them drying out for even longer by placing them in the fridge.



Tip
Any masking tape should only be removed once the paint is touch-dry, but make sure you do it on the same day to get that beautiful, crisp painted line.



Painting a Ceiling

Suggested Finishes:

Absolute Matt Emulsion | Intelligent Matt Emulsion

General advice when painting a whole room is to paint the ceiling first (then woodwork, finishing with the walls. The ceiling is potentially the messiest job, and it's easier to mask-off the painted woodwork when you paint the walls than the other way round).

1. If there is a cornice or coving, decide whether this will either be painted the same colour as the ceiling, the same colour as the walls, or a different shade.
2. Start by applying a two or three inch border of paint around the edge of the ceiling with a smaller brush, just as you would for the walls. If you will be painting the adjoining surface (coving or walls), you don't need to worry about the fine detail of the cutting-in, but do go over the edges rather than finishing short.
3. You can reduce the chances of 'hatbanding' (a visible change in the painted surface where brushed and roller areas meet) by ensuring your application towards the inside edges is gradually thinned out ('feathered').
4. With the roller (ideally on a handle extension) apply an even coat in sections approximately one metre (three feet) square, across the width of the room rather than the length. Following the shorter dimension will help you work to a wet edge and thus reduce the chance of leaving 'lap marks'.
5. Take care not to overload the roller (it will drip) or let it roll dry (it won't apply enough paint).
6. Ventilate the room if possible, allow two-four hours for the first coat to dry, inspect and repeat for the second coat if necessary.

Tip

Start at the side of the room nearest the windows and work backwards. The cast of natural light will make it easier to check for even coverage, especially if painting white-on-white.



Painting Woodwork

Suggested Finishes:

Intelligent Eggshell
Intelligent Satinwood | Intelligent Gloss
Flat Oil Eggshell | Traditional Oil Gloss

Woodwork in this context refers to skirting boards, architrave, interior doors, panelling and architectural mouldings such as dado rails and picture rails.

1. Protect the floor with newspaper or cardboard, using masking tape to secure it at the edges.
2. Ensure any old flaking paint is entirely removed, and transitions in surface quality are 'feathered' (gradual).
3. Fill any surface abrasions and sand smooth when dry. The paint will give you a beautiful finish, but isn't capable of completely concealing cracks and holes.
4. Previously painted woodwork in good condition should be sanded back to provide a key, this is particularly important for glossy surfaces. If the surface is sound and consistent, no primer or undercoat should be necessary. Otherwise apply one coat of Little Greene A.S.P.
5. Use a small brush to apply paint at the extremities of the surface and into any intricate mouldings, taking care not to let paint pool in crevices where it will slowly sag or even drip while it dries.
6. Larger areas are efficiently covered with the use of a small foam roller or a bigger brush, depending on scale. A popular way of painting woodwork is to use a roller to efficiently apply the paint, and a brush to 'lay-off' the surface while the paint is still wet. This avoids the orange-peel effect associated with overly-hasty paint application, or too long a nap (of the roller!).

Tip

Woodwork tends to get dirtier than walls, so cleaning it before painting is essential. Use a small amount of detergent with wet 'n' dry abrasive paper to clean and sand the surface at the same time.



Painting a Radiator

Suggested Finishes:

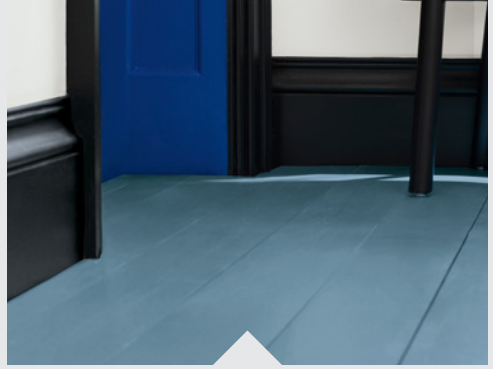
Intelligent Eggshell
Intelligent Satinwood | Intelligent Gloss
Flat Oil Eggshell | Traditional Oil Gloss

Painting a radiator will not affect its heat output. All the high-quality finishes above can be used, depending on the desired sheen level.

However, never paint a hot radiator, or use central heating to assist with the drying of a newly painted radiator – this work needs to be started and finished while the radiator is at room temperature.

Some radiators are considered things of beauty and worth featuring in a room by using a contrasting colour. Others are purely functional, and are best 'lost' by painting them the same colour as the wall.

1. New radiators are generally supplied primed and sometimes coated. Glossy finishes should be rubbed with abrasive paper to give any subsequent coats something to stick to.
2. Use a cloth and/or vacuum cleaner to clean all surfaces.
3. The preparation of heavily tarnished or rusted radiators may require a wire brush and a specific metal primer.
4. If the radiator is removed from its position, consider painting the wall behind it at this time. If not, a long-handled roller will be used to best access the wall behind it, when painting the rest of the walls.
5. Mask off pipework and valves.
6. Apply one coat of Little Greene A.S.P. followed by two coats of your chosen finish by brush, paying special care to avoid drips, particularly in the vent profiles where excess paint will naturally accumulate.



Painting a Floor

Suggested Finishes:

Intelligent Floor Paint | Oil-Based Floor Paint

Both versions of our durable floor paint are suitable for wooden or concrete floors. Providing the substrate is sound and clean, neither require a separate primer or undercoat.

You need to remove everything from the room. Trying to work in sections will take considerably longer and is only worth considering if it can't be avoided.

1. After undertaking any filling of holes, thoroughly vacuum the floor, sand it and then vacuum it again – any surface particles including dust, dirt and dog hairs will be immortalised in the finished floor if not removed!
2. Consider masking off the skirting boards if you're not confident about accurately cutting in the edges with a brush.
3. Exactly as with painting walls or a ceiling, the job of cutting-in around all the edges with a brush is necessary, as you can't reach right up to the skirting board with a roller.
4. It sounds obvious, but you must start painting in the furthest corner from the door, and work back to it.
5. If painting floorboards, use a brush or foam roller along the whole length of individual boards to reduce the risk of lap marks.
6. Repeat for the second coat and leave it as long as is practically possible (minimum two hours for Intelligent Floor Paint or six hours for oil-based Floor Paint) before walking on it. Bear in mind that, whilst these finishes will be dry in a few hours, they take a few days to fully harden. This is true of all paints.

Tip

You can trick your eye into thinking that the floor (and thus the whole room) is a bit bigger by painting the skirting boards in the same colour as the floor. The effect is much more dramatic with a contrasting colour on the walls.

Cleaning Up

Water-Based Finishes:

Little Greene's Intelligent Paints are all water-based and environmentally-friendly, so clean-up requires only running water.

Scrape off excess paint from brushes and roller sleeves back into the tin, and forcibly drag them over newspaper or a cotton rag before rinsing.

Add a few drops of mild washing-up liquid and use a brush-comb, stiff brush or a rounded roller scraper to coax off any remaining paint.

Rinse well and pat the washed brushes and roller sleeves dry with paper towels. Good brushes have a hole in the handle, this is so they can be stored hanging up. Don't let them dry 'bristles-up' as excess water is then fed onto the ferrule and handle which reduces the brush's longevity and performance.

Ideally, protect dry brushes in their original card sleeves.

Oil-Based Finishes:

Brushes and rollers used for oil-based paints should be rinsed with cleaning solvent (e.g. white spirit).

Scrape off excess paint back into the tin before using newspaper or a cotton rag to soak up as much remaining paint as possible.

Decant a small amount of solvent into the bottom of a paint kettle or bowl, immerse the brushes or roller sleeves and gently work in the white spirit.

Tip the solvent into a disposable container or empty paint can, and repeat using clean white spirit.

Once the brushes or roller sleeves are clean, swap the white spirit for hot, soapy water and work thoroughly in the solution before finally rinsing out under a warm tap.

Pat the washed brushes or roller sleeves dry with paper towels, then store as described opposite.

Storing Paint

Always store paint tightly sealed in its original container, out of extreme temperatures, and away from children.

Disposal

Check at your local authority waste disposal site as regional procedures vary.

How to
paint a wall



Scan to watch

Little Greene®
— PAINT & PAPER —

The Coach Works | 420 Ashton Old Road | Manchester M11 2DT

Tel: 0845 880 5855 (UK) | Tel: +44 161 23 00 880 (Overseas)

mail@littlegreene.com | www.littlegreene.com

